

Xerox® DocuMate® 3640

Departmental Duplex Scanner

Scans at 80 ipm

- Scans documents at 40 ppm in simplex and 80 ipm in duplex*
- A4/legal size flatbed**
- 99 OneTouch destinations can be customised for each person in the department
- 80 page ADF capacity***
- Create searchable PDF files to make it easy to find scanned documents
- Ultrasonic Double Feed Detection
- Superior image quality with Kofax VRS software included
- Visioneer OneTouch scanning to multiple applications including Xerox DocuShare
- Daily Duty Cycle – 5,000 pages

*up to 80 ipm at 200 dpi, black & white
 ** Actual flatbed size, 216 x 356 mm / 8.5" x 14"
 *** 20#, 75-80 g/m² paper



Xerox DocuMate 3640

The DocuMate 3640 is a departmental duplex flatbed scanner with a 80 page Automatic Document Feeder (ADF) that scans up to 80 images per minute (ipm) in duplex mode. The A4/legal flatbed is the only departmental scanner that can be programmed to automatically scan to 99 customisable applications or devices. Ultrasonic Double Feed Detection insures that no pages are missed due to a misfeed or stapled document in the ADF tray. Documents can be converted to textsearchable PDF in one easy step.

The Xerox DocuMate 3640 is the perfect solution for company wide scanning solutions and enables businesses to achieve high levels of productivity by distributing fast, costeffective departmental scanners throughout the organisation.

Work Smarter

The DocuMate 3640's powerful software, robust functionality and hardware specifications deliver the speed and quality for departmental scanning. The DocuMate 3640 offers file format flexibility including text-searchable PDF.

The included Kofax VRS™ software provides capabilities such as auto crop and auto exposure and wide angle de-skew. VRS also helps improve the accuracy of recognition software, thereby reducing the need for manual correction of intelligent character recognition and OCR results.

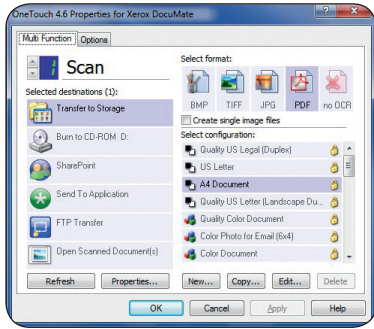
Vertical Market Solutions

Regulatory compliance requirements have dramatically increased the need for companies to implement secure and reliable records for management and document capture solutions. Departmental scanners are ideal for document management in small to mid volume applications and may also be used to complement higher volumes products in distributed scanner settings.

Document capture solutions have become essential to meet the everyday document imaging needs of businesses in the finance, insurance, healthcare, transportation and education markets. Likewise, many law offices, courts, clients and administrators handle and manage substantial quantities of paper. Documents are the substance of communication, reference, negotiation and execution of contracts, laws and evidence. Fast reliable and cost effective document imaging solutions like the DocuMate 3640 provide almost immediate return on investment when implemented in legal offices.

The Xerox DocuMate 3640 is the perfect scanning solution for the whole department or even just the person who supports the whole department.

Visioneer OneTouch



Visioneer OneTouch is an easy to use utility that connects the DocuMate scanner with a powerful set of scanner settings to greatly improve the efficiency of your workflow – so that with one touch, the document is scanned automatically to email, Word, your printer, or simply a file folder.

In addition to scanning directly to all popular destinations, Visioneer OneTouch also links the DocuMate 3640 with industry-leading document management software, such as Microsoft SharePoint, DocuWare and Xerox DocuShare™ – forming an easy to use workflow from paper to a selected destination. A Software Development Kit (SDK) is also available which provides the

ability to develop specific links and integrate them into the Visioneer OneTouch control panel quickly and easily.

Kofax VRS technology

Visioneer OneTouch with Kofax VRS is an integrated software solution that combines the ease of Visioneer OneTouch scanning, with the superior image quality achieved with Kofax VRS. Kofax VRS is an award winning patented technology that automatically ensures the best possible image quality and OCR accuracy for scanned document images. As pages pass through the scanner, VRS performs a multi-point inspection of each document, instantly checking and adjusting alignment (skew), brightness, contrast and image clarity.



Kofax VRS Pro Upgrade

An upgrade from Kofax VRS Basic to Kofax VRS Professional is available which provides additional features such as, advanced clarity, auto colour detect, auto rotation, blank page detection, bleed through detection and lots more.

Nuance PDF Converter

Nuance PDF Converter is the smarter PDF software choice for businesses. Combining powerful functionality, superior Microsoft Office® support, built-in intelligence, DMS integration, and intuitive ease of use, Nuance PDF Converter provides everything you need to create, convert, edit, assemble, and securely share PDF files for increased productivity, enhanced collaboration, and improved compliance.

Nuance OmniPage® Pro

OmniPage Pro provides a precise OCR and layout retention solution, quickly turning scanned documents into editable, formatted text. The text can then be used in virtually any word processing, desktop publishing or web publishing program.

| DocuMate 3640 Product Specifications | |
|--|---|
| Xerox Part No.: | |
| DocuMate 3640 VRS Basic | 003R92152 |
| DocuMate 3640 VRS Professional | 003R92156 |
| Scan Speed: Black & White, 200 dpi | 40 ppm simplex / 80 ipm |
| Colour, 150 dpi | 40 ppm simplex / 80 ipm |
| Optical Resolution | 600 dpi |
| Output Bit Depth | 24-bit colour, 8-bit greyscale, 1-bit black & white |
| Scan Method | Fast Duplex Sheetfed |
| Interface | Hi-Speed USB 2.0 (USB 1.1 compatible) |
| Dimensions (not including paper trays) width x depth x height | 437 x 530 x 230 mm (17.5" x 20.9" x 9.1") |
| Weight (not including paper trays) | 11.4 kg (25.2 lbs.) |
| ADF Maximum Document Size | 216 x 914 mm (8.5" x 36") |
| ADF Minimum Document Size | 140 x 140 mm (5.5" x 5.5") |
| Flatbed Maximum Document Size | 216 x 356 mm (8.5" x 14") |
| Flatbed Minimum Document Size | 13 x 13 mm (0.15" X 0.15") |
| Paper thickness | 60 - 105 g/m ² |
| ADF Capacity | 80 sheets (75-80 g/m ² / 20 lb.paper) |
| Duty Cycle | 5,000 pages |

Minimum System Requirements

- Pentium® IV or equivalent processor
- Windows® XP / Vista / 7 / 8
- 512 MB RAM (1 GB for 7 / 8)
- 500 MB available hard drive space
- CD-ROM drive
- USB port

Contents

- DocuMate 3640 Scanner
- Power Supply
- USB 2.0 Cable
- Quick Install Card
- Technical Support Card
- Paper Input Tray
- Spare ADF Pad Assembly
- Buttons Label
- DVD-ROM including:
 - User's Manual
 - Kofax VRS
 - Nuance OmniPage Pro
 - Nuance PaperPort
 - Visioneer OneTouch
 - Visioneer Acuity
 - Nuance PDF Converter
 - Scanner Drivers (TWAIN, ISIS and WIA Driver)
 - EMC Captiva QuickScan Pro Demo

For further information please visit: www.xeroxscanners.co.uk

